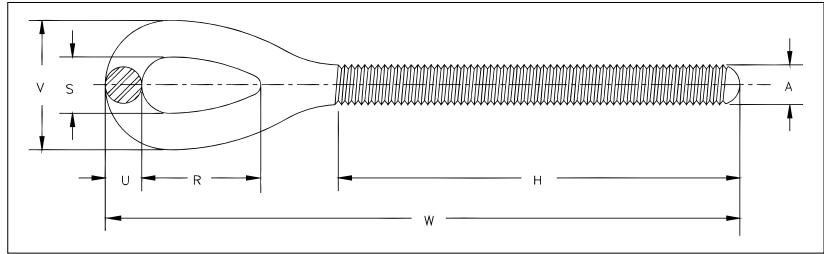




**HG-4037**

- Quenched & Tempered or normalized.
- Hot-dip galvanized steel.
- Turnbuckle eyes are forged elongated, by design, to maximize easy attachment in system and minimize stress in the eye. For turnbuckle sizes 1/4" through 2-1/2", a shackle one size smaller can be reeved through eye.
- Modified UNJ thread for improved fatigue properties.
- Fatigue rated.



**HG-4037 Eye End Fittings**

Shank Dia. & Take Up (in)	RH Eye Stock No.	LH Eye Stock No.	Working Load Limit (lb)	Weight Each (lb)	Dimensions (in)						
					A	H	R	S	U	V	W
* 1/4 x 4	1071057	1071672	500	.07	.25	2.59	.81	.34	.22	.78	4.19
* 5/16 x 4 1/2	1071075	1071690	800	.13	.31	3.00	.95	.44	.28	1.00	4.99
* 3/8 x 6	1071093	1071716	1200	.23	.38	3.88	1.13	.53	.34	1.21	6.12
1/2 x 6	1071119	1071734	2200	.51	.50	4.19	1.41	.71	.44	1.59	7.41
1/2 x 9	1071137	1071752	2200	.59	.50	5.69	1.41	.71	.44	1.59	8.91
1/2 x 12	1071155	1071770	2200	.68	.50	7.19	1.41	.71	.44	1.59	10.41
5/8 x 6	1071173	1071798	3500	.82	.63	4.44	1.80	.88	.50	1.88	8.36
5/8 x 9	1071191	1071814	3500	.95	.63	5.94	1.80	.88	.50	1.88	9.86
5/8 x 12	1071217	1071832	3500	1.08	.63	7.44	1.80	.88	.50	1.88	11.36
3/4 x 6	1071235	1071850	5200	1.36	.75	4.56	2.09	1.00	.63	2.26	9.25
3/4 x 9	1071253	1071878	5200	1.55	.75	6.06	2.09	1.00	.63	2.26	10.75
3/4 x 12	1071271	1071896	5200	1.73	.75	7.56	2.09	1.00	.63	2.26	12.25
3/4 x 18	1071299	1071912	5200	2.10	.75	10.56	2.09	1.00	.63	2.26	15.25
7/8 x 12	1071315	1071930	7200	2.61	.88	7.81	2.38	1.25	.75	2.75	13.10
7/8 x 18	1071333	1071958	7200	3.12	.88	10.81	2.38	1.25	.75	2.75	16.10
1 x 6	1071351	1071976	10000	3.15	1.00	5.06	3.00	1.43	.88	3.19	11.00
1 x 12	1071379	1071994	10000	3.81	1.00	8.06	3.00	1.43	.88	3.19	14.00
1 x 18	1071397	1072010	10000	4.48	1.00	11.06	3.00	1.43	.88	3.19	17.00
1 x 24	1071413	1072038	10000	5.15	1.00	14.06	3.00	1.43	.88	3.19	20.00
1-1/4 x 12	1071431	1072056	15200	7.07	1.25	8.38	3.59	1.82	1.12	4.06	16.19
1-1/4 x 18	1071459	1072074	15200	8.12	1.25	11.38	3.59	1.82	1.12	4.06	19.19
1-1/4 x 24	1071477	1072092	15200	9.16	1.25	14.38	3.59	1.82	1.12	4.06	22.19
1-1/2 x 12	1071495	1072118	21400	10.3	1.50	8.75	4.09	2.12	1.25	4.62	17.37
1-1/2 x 18	1071510	1072136	21400	11.8	1.50	11.75	4.09	2.12	1.25	4.62	20.37
1-1/2 x 24	1071538	1072154	21400	13.3	1.50	14.75	4.09	2.12	1.25	4.62	23.37
1-3/4 x 18	1071574	1072190	28000	17.5	1.75	12.16	4.65	2.38	1.50	5.38	21.19
1-3/4 x 24	1071592	1072216	28000	19.5	1.75	15.16	4.65	2.38	1.50	5.38	24.19
2 x 24	1071618	1072234	37000	28.9	2.00	15.59	5.81	2.69	1.75	6.19	27.59
2-1/2 x 24	1071636	1072252	60000	46.4	2.50	17.56	6.50	3.12	2.00	7.12	29.59
2-3/4 x 24	1071654	1072270	75000	60.2	2.75	17.69	7.00	3.25	2.25	7.75	30.92

\*Mechanically galvanized