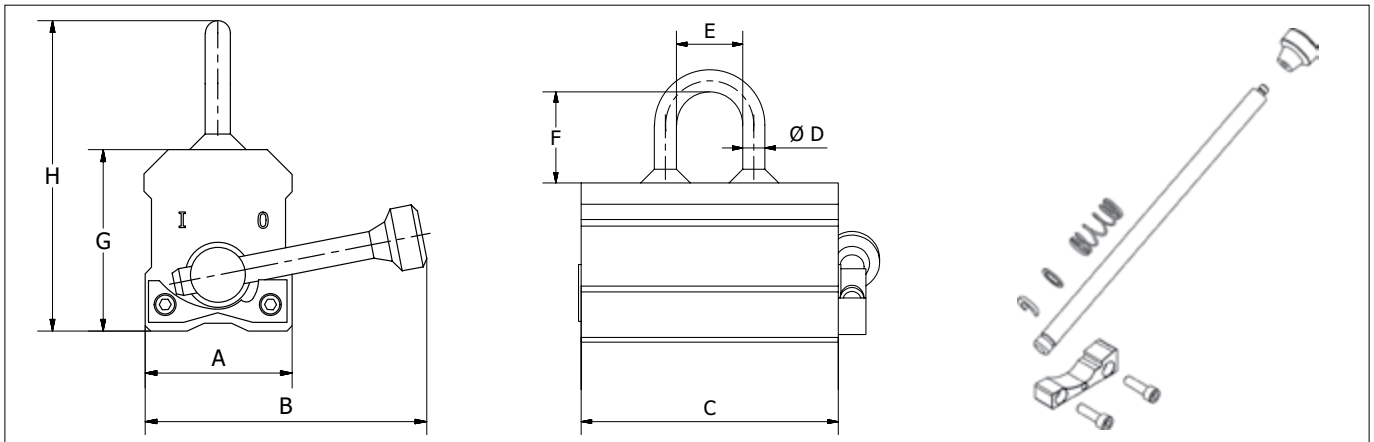


## MAGNEX™



### For Horizontal Lifting and Transfer.

- Solid steel construction with recessed area, reducing risk of damage to tags for identification and technical user information.
- Fully welded construction, minimizing maintenance costs.
- Innovative and patented easy switch stop block, equipped with ball bearing and ergonomic handle for increased safety and ease of use.
- Individually proof tested to 3 times the working load limit with certification.
- Each product is individually serialized, with the serial number and proof load test date stamped on body.
- User manual with test certificate included with each magnet
- 5-year warranty on magnetic system.
- CE certified including test certificate in accordance with EN 13155.
- Maintenance replacement kits are available.



## Crosby MAGNEX™ Lifting Magnet



Model	WLL (lb)*	Stock No.	Weight each (lb)	Dimensions (in)							
				A	B	C	D	E	F	G	H
MAGNEX150	331	2708023	6.8	2.4	4.5	4.0	0.4	1.2	1.6	2.7	4.7
MAGNEX300	661	2708024	24	3.9	8.3	6.0	0.6	2.0	2.6	3.9	7.0
MAGNEX600	1323	2708025	47.8	4.7	9.6	9.7	0.8	2.5	2.6	3.9	7.2
MAGNEX1000	2205	2708026	90.2	5.7	13.0	12.0	0.8	2.5	3.6	4.9	9.3
MAGNEX1500	3307	2708027	158.1	6.5	15.4	14.7	0.8	2.5	3.6	6.3	10.7
MAGNEX2000	4409	2708028	201.5	6.5	18.7	18.8	0.8	2.5	3.6	6.3	10.7

12

Model	Flat Material			Round Material			Handle Kit Stock No.
	WLL (lb)*	min. thickness for max. WLL (in)*	min. load thickness (in)	WLL (lb)*	min. Ø (in)	max. Ø (in)	
MAGNEX150	331	0.98	0.08	166	2.0	3.9	2718001
MAGNEX300	661	1.18	0.16	331	2.4	7.9	2718002
MAGNEX600	1323	1.57	0.24	662	2.6	10.6	2718003
MAGNEX1000	2205	2.36	0.39	1103	3.9	11.8	2718004
MAGNEX1500	3307	3.15	0.59	1654	5.9	13.8	2718005
MAGNEX2000	4409	3.15	0.59	2205	5.9	13.8	2718006

\*WLL based on low carbon, mild steel and a working temperature 68°F