

680 Series Construction Blocks



680 Construction Block with shackle



680 Construction Block with hanger



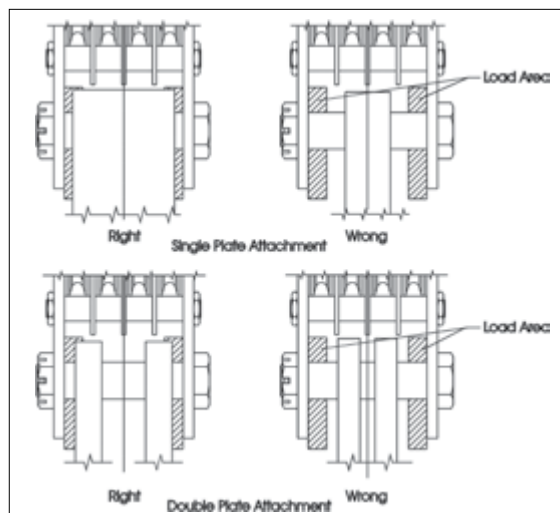
680 Construction Block bolt only

APPLICATION AND WARNING INFORMATION
SECTION 17

- Wide range of products available:
 - 5 to 100 short Tons capacity
 - 6" to 24" sheave diameter
 - 3/8" to 1-1/4" wire rope diameter
 - Larger capacity blocks available
- Equipped with genuine Crosby® forged steel Quenched & Tempered shackles that contain the patented QUIC-CHECK® markings.
- Design Factor of 4:1.
- All 680 Series Blocks are furnished standard with bronze bushings.
- All 680 Series Blocks 16" and larger, are furnished with McKissick® roll-forged sheaves with flame-hardened grooves.
- Sheaves are lubricated through center pin with a separate lube channel to each bearing.

- Single sheave blocks have thimble dead end.
- Manufactured by an ISO 9001 and API Q1 Certified facility.
- Marked in short tons unless metric tag requested at time of order.
- Meets or exceeds all requirements of ASME B30.26. Importantly, these blocks meet other critical performance requirements including fatigue life, impact properties and material traceability, not addressed by ASME B30.26.

Block Loading Area



NOTE: The outside of attaching plates must be within the indicated load areas. Means must be provided to keep attaching plates equally spaced from the block side plates. For dimension information, including the load area, visit kitocrosby.com/tables.

OPTIONS AVAILABLE

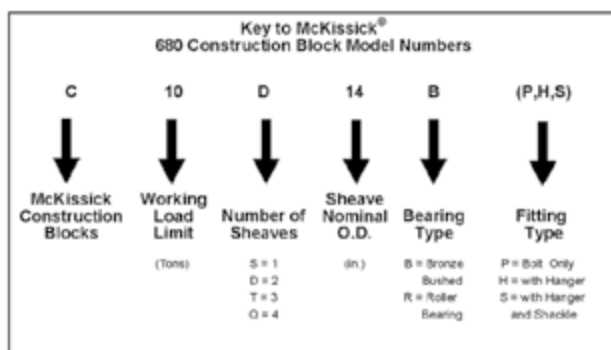
- Roller bearing sheaves
- Hanger and Bolt Only models available
- Third party testing with certification
- Galvanized finish – Most models

McKissick® Construction Blocks

To see the legacy dimensional tables for McKissick® 680 Series Construction Blocks, visit kitocrosby.com/tables

	OD (mm)	SHV OD (in)	Capacity in short Tons																	
			5	7.5	10	15	20	25	30	35	40	45	50	55	60	65	70	80	90	100
1 SHV	152	6																		
	203	8																		
	254	10																		
	305	12																		
	356	14																		
	457	18																		
2 SHV	152	6																		
	203	8																		
	254	10																		
	305	12																		
	356	14																		
	406	16																		
	457	18																		
	508	20																		
3 SHV	610	24																		
	152	6																		
	203	8																		
	254	10																		
	305	12																		
	356	14																		
	406	16																		
	457	18																		
	508	20																		
	610	24																		
4 SHV	203	8																		
	254	10																		
	305	12																		
	356	14																		
	406	16																		
	457	18																		
	508	20																		
	610	24																		
5 SHV	508	20																		
	610	24																		
6 SHV	508	20																		
	610	24																		

Review the table above to see all standard configurations available. We have also engineered thousands of special crane blocks, so it is very likely that we have the ideal solution to your rigging application. Visit kitocrosby.com/engineeredolutions to learn more.



Sheave Diameter (mm)	Wireline Size (mm)							
	10	11	13	14	16	19	22	26
152								
203								
254								
305								
356								
406								
457								
508								
610								