

# 680 Series Construction Blocks



**680 Construction Block with shackle**



**680 Construction Block with hanger**



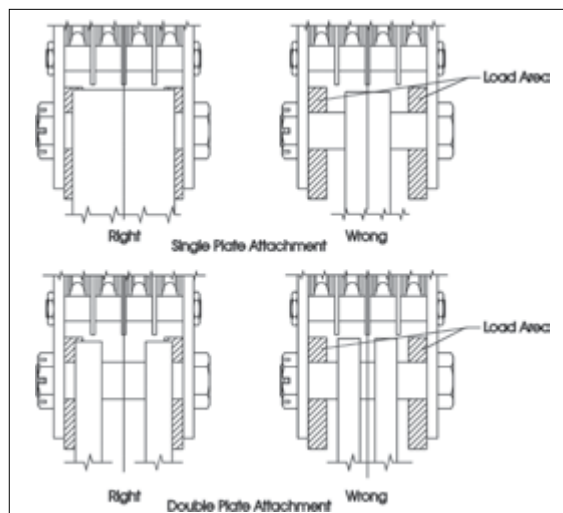
**680 Construction Block bolt only**

APPLICATION AND WARNING INFORMATION  
SECTION 17

- Wide range of products available:
  - 4.5t to 90t capacity
  - 152mm to 610mm sheave diameter
  - 10mm to 32mm wire rope diameter
  - Larger capacity blocks available
- Equipped with genuine Crosby® forged steel Quenched & Tempered shackles that contain the patented QUIC-CHECK® markings.
- Design Factor of 4:1.
- All 680 Series Blocks are furnished standard with bronze bushings.
- All 680 Series Blocks 406mm and larger, are furnished with McKissick® roll-forged sheaves with flame-hardened grooves.
- Sheaves are lubricated through center pin with a separate lube channel to each bearing.

- Single sheave blocks have thimble dead end.
- Manufactured by an ISO 9001 and API Q1 Certified facility.
- Marked in short tons unless metric tag requested at time of order.
- Meets or exceeds all requirements of ASME B30.26. Importantly, these blocks meet other critical performance requirements including fatigue life, impact properties and material traceability, not addressed by ASME B30.26.

## Block Loading Area



NOTE: The outside of attaching plates must be within the indicated load areas. Means must be provided to keep attaching plates equally spaced from the block side plates. For dimension information, including the load area, visit [kitocrosby.com/tables](http://kitocrosby.com/tables).

## OPTIONS AVAILABLE

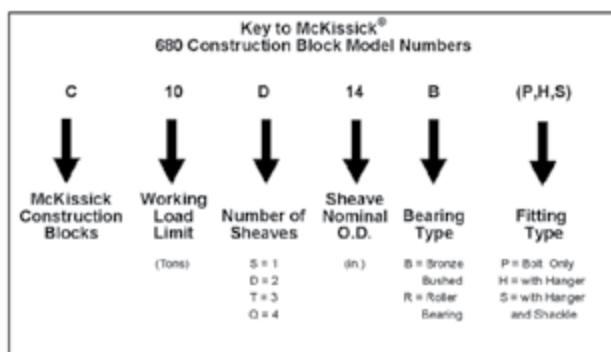
- Roller bearing sheaves
- Hanger and Bolt Only models available
- Third party testing with certification
- Galvanized finish – Most models

## McKissick® Construction Blocks

To see the legacy dimensional tables for McKissick® 680 Series Construction Blocks, visit [kitocrosby.com/tables](http://kitocrosby.com/tables)

	OD (mm)	SHV OD (mm)	Capacity in metric tons																	
			4.5	6.8	9.1	13.6	18.1	22.7	27.2	31.8	36.3	40.8	45.4	49.9	54.4	59.0	63.5	72.6	81.6	90.7
1 SHV	3861	152																		
	5156	203																		
	6452	254																		
	7747	305																		
	9042	356																		
	11608	457																		
2 SHV	3861	152																		
	5156	203																		
	6452	254																		
	7747	305																		
	9042	356																		
	10312	406																		
	11608	457																		
	12903	508																		
3 SHV	15494	610																		
	3861	152																		
	5156	203																		
	6452	254																		
	7747	305																		
	9042	356																		
	10312	406																		
	11608	457																		
4 SHV	12903	508																		
	15494	610																		
	5156	203																		
	6452	254																		
	7747	305																		
	9042	356																		
	10312	406																		
	11608	457																		
5 SHV	12903	508																		
	15494	610																		
6 SHV	12903	508																		
	15494	610																		

Review the table above to see all standard configurations available. We have also engineered thousands of special crane blocks, so it is very likely that we have the ideal solution to your rigging application. Visit [kitocrosby.com/engineeredolutions](http://kitocrosby.com/engineeredolutions) to learn more.



Sheave Diameter (mm)	Wireline Size (mm)							
	10	11	13	14	16	19	22	26
152								
203								
254								
305								
356								
406								
457								
508								
610								