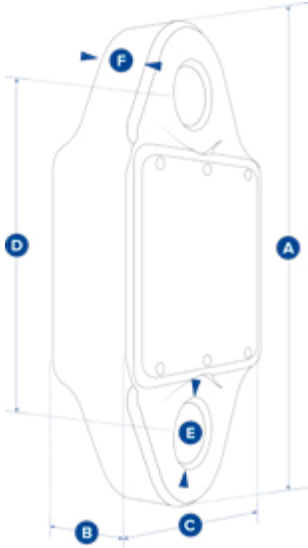




BlueLink

- Design Factor: 5:1.
- Battery Type: 4 x AA alkaline batteries.
- Battery Life: 500 hours.
- Operating Temperature: -10°C to +50°C.
- Accuracy: ±0.2% of full scale.
- Range: 100 meters.
- Data Rate: 3 Hz.
- Protection: IP67 / NEMA6.



Straightpoint BlueLink (BLD) 

Stock No.	Model	Capacity (t)	Resolution (t)	Weight (kg)	Dimensions (mm)						Crosby Shackle	
					A	B	C	D	ØE	F		
2789218	BLD6T5	6.5	0.001	1.5	224	44	113	156	27.5	33	G2130	1019533

Designed to replace outdated mechanical products still in the field, this 6,500 kg dynamometer, the BlueLink, is the latest Crosby Straightpoint product to feature proprietary Bluetooth wireless technology.

The Bluetooth signal effortlessly connects to any iOS or Android smartphone that has our free HHP app installed, providing the operator with a wireless range of up to 100 m. This allows them to stand in a safe position from the load with no requirement to read a load on the loadcell itself. The app also allows the operator to log data versus time, or on events such as over- or under-load. An adjustable alarm will alert the operator on their smartphone if any overload is occurring.

Rigged using industry standard Crosby G2130 Shackles, the BlueLink has been designed to minimize headroom (156mm from eye to eye). With a design factor of over 5:1, its compact lightweight design does not sacrifice on strength.

Constructed from high-quality aerospace grade aluminum, which is then hard-anodized, BlueLink features an advanced internal design structure. This design provides the product with an unrivaled strength to weight ratio. The use of a separate internal sealed enclosure administers the loadcell's electronic components with IP67 or NEMA6 environmental protection, even with the battery cover plate missing. All these features makes it an industry-leading compact dynamometer, even more suitable for use in the harshest industrial or leisure environments.

The BlueLink is powered by four standard AA alkaline batteries that provide in excess of 500 hours transmission time. Its internal antenna ensures safe transmissions of loads to an accuracy of ±0.2% FS.