

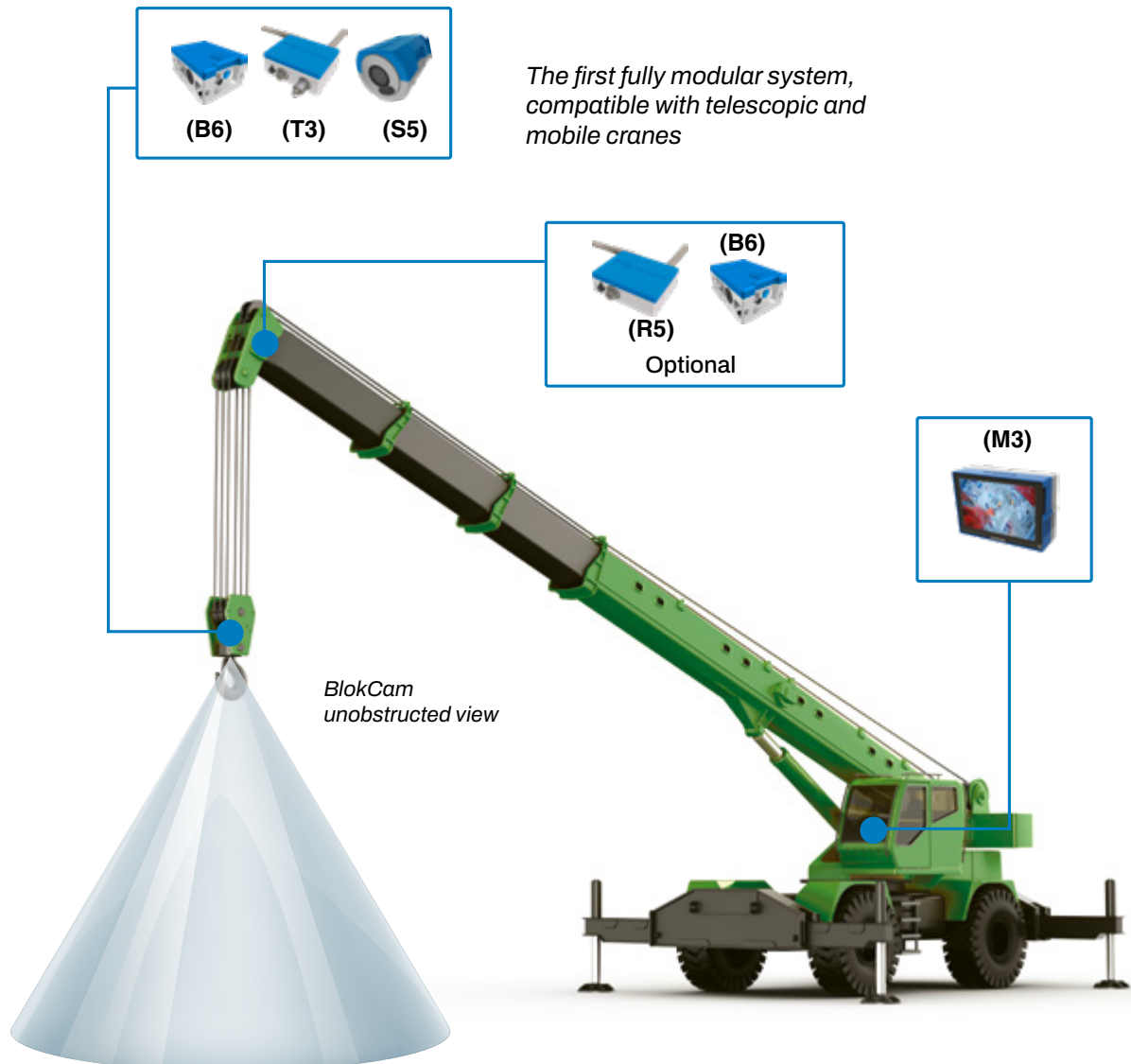
BlokCam M3L Camera System

for mobile & telescopic cranes | Part # 7380009

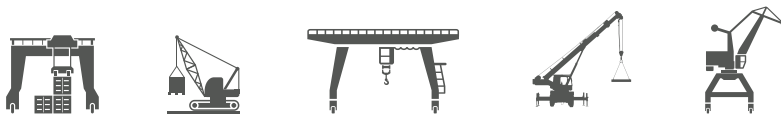
Design Overview

- Specifically designed for the mobile and crawler market.
- Can be installed and removed within five minutes.
- Uses high powered neodymium magnets.
- The lens is auto-focus and always gives clear views of the load and surrounding area below the hook.
- HD 1080p resolution.
- Audio from sensor to cab.
- Long range transmission.
- Record on loop for up to 30 days.
- Purpose built aluminum housing.
- Multiple built in lanyard anchors.
- Safety lanyard provides secondary security tethering.
- Hands-free operation.
- Multi positional sensor for variable views.
- LED indicators.
- Two batteries per system.
- 12-hr battery life.
- Multi-voltage AC and DC inputs.
- Durable all-weather design, manufactured to IP67 rating.
- -4°F to 131°F operating temperature.
- Optional mobile app and 4G live streaming.
- CE and FCC approved.
- High quality industrial connectors.
- Color coded connectors.

3



Modular design, compatible across a wide variety of cranes¹

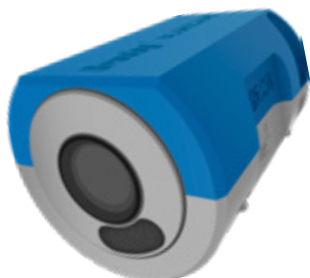


What's included with the BlokCam M3L system

Sensor (S5)

Part # 7370022

The S5 is a 113° wide angle lens. The low profile design, tool-free operation, and rotatable lens allows for easy installation on any side of the hook block, including between the cheek plates.



Transmitter (T3)

Part # 7370023

T3 dramatically improves the most important aspects of the BlokCam. The combination of performance, specification, aesthetics, and 71mm low-profile design make this a must for all crane operations. Connect up to two sensors.



Battery (B6)

Part # 7370032

B6 is a non-hazardous lithium 14.54v battery pack. The clever tool-free design and easy grip finger slots makes it easy to install, remove, and charge. IP67.



Monitor (M3)

Part # 7370014

The M3 is an all in one display that combines a monitor, repeater and processor in to a purpose built fast fit system. The M3 has a HD display with built in speakers, automatic brightness control, less than 0.2 seconds of latency and multi-voltage AC and DC inputs.



Charger (B6-CH3)

Part # 7360033

Our li-ion charger is designed to improve the efficiency of your BlokCam batteries and the performance of the camera system.



Hook-mounted safety system and accessories available at kitocrosby.com/blokcaml.