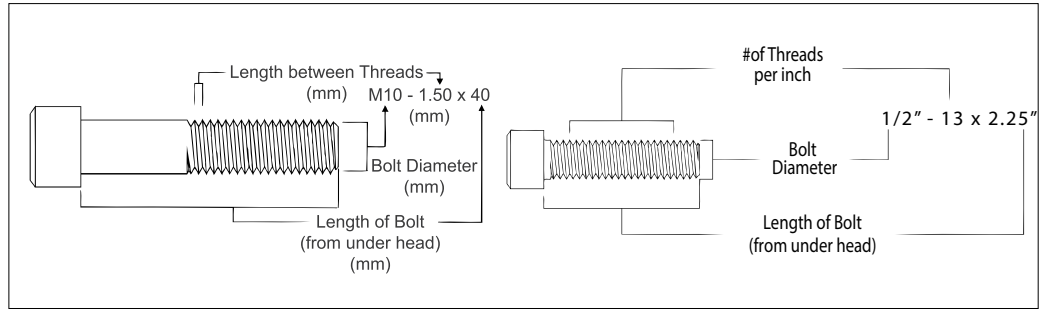
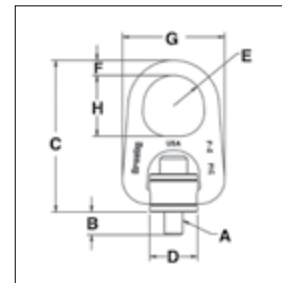


HR-1000CT



LIFTING POINTS

- All load bearing components are heat treated, Quenched & Tempered alloy steel.
- All components, with the exception of the retaining ring, are produced with maximum material hardness of 34 HRC.
- All primary load-bearing components have Charpy impact testing. The body, bushing, washer and bail meet impact requirements of 31 ft-lb min. avg. at -4°F. The bolt meets impact requirements of 20 ft-lb min. avg. at -150°F.
- Individually magnetic particle inspected with certification.
- Forged bail provides the following:
 - Easily readable raised lettering showing the name Crosby or "CG" and PIC for material traceability.
 - Greater durability providing the increased toughness desired in potentially abusive field conditions.
 - Larger opening than standard hoist ring bail.
- Bolt specification is an alloy socket head cap screw to ASTM A320 Grade L7 or L43.
- Top washer is color-coded for easy identification (blue for UN threads and grey for Metric threads).
- The Working Load Limit and recommended torque value are permanently stamped into each washer.
- Individually Proof Tested to 2 times Working Load Limit (90° and in-line).
- BOLT SIZE IDENTIFICATION: The size of the bolt will be stated as in the drawing above. Illustration shows meaning of each dimension given.
- Type approval and certification in accordance with DNV Offshore Standard DNV-OS-E101, Drilling Plant, Standard for Certification DNVGL-ST-0378, Lifting Appliances, and DNVGL-SI-0166.
- Individually serialized.
- 100% MPI all primary load bearing components.
- Coating: Thermo-diffusion galvanized.
- Optional bolt sizes available upon request.



HR-1000CT UNC Threads

Frame Size No.	Stock No.	Working Load Limit (lb)	Torque (ft-lb)	Dimensions (in)									Mass Each (lb)
				Bolt Size A	Effective Thread Projection Length B	C	D	Radius E	Diameter F	G	H		
2	6608103	1900	28	1/2 - 13 x 2.25	0.70	6.32	1.96	1.25	0.75	4.20	2.50	3	
2	6608112	1900	28	1/2 - 13 x 2.75	1.20	6.32	1.96	1.25	0.75	4.20	2.50	3	
2	6608121	3000	60	5/8 - 11 x 2.25	0.70	6.32	1.96	1.25	0.75	4.20	2.50	3	
3	6608130	4800	100	3/4 - 10 x 3.00	0.85	8.59	2.96	1.63	1.00	6.25	3.25	11	
3	6608139	6200	160	7/8 - 9 x 3.00	0.85	8.59	2.96	1.63	1.00	6.25	3.25	11	
3	6608148	8300	230	1 - 8 x 3.50	1.35	8.59	2.96	1.63	1.00	6.25	3.25	11	
4	6608149	12500	470	1-1/4 - 7 x 5.00	2.10	11.31	3.71	2.00	1.44	8.13	4.00	24	
4	6607669	20000	800	1-1/2 - 6 x 5.50	2.60	11.31	3.71	2.00	1.44	8.13	4.00	27	
4	6607727	20000	800	1-1/2 - 8 x 5.50	2.60	11.31	3.71	2.00	1.44	8.13	4.00	27	
5	6607670	28000	1100	2 - 4.5 x 7.50	3.20	15.15	4.00	2.69	1.75	11.64	5.00	69	
6	6607671	45000	2100	2 1/2 - 4 x 9.50	3.73	19.93	5.75	3.00	2.75	14.47	5.62	157	

5:1 Design Factor.



Load Rated

Fatigue Rated

APPLICATION AND WARNING INFORMATION SECTION 17