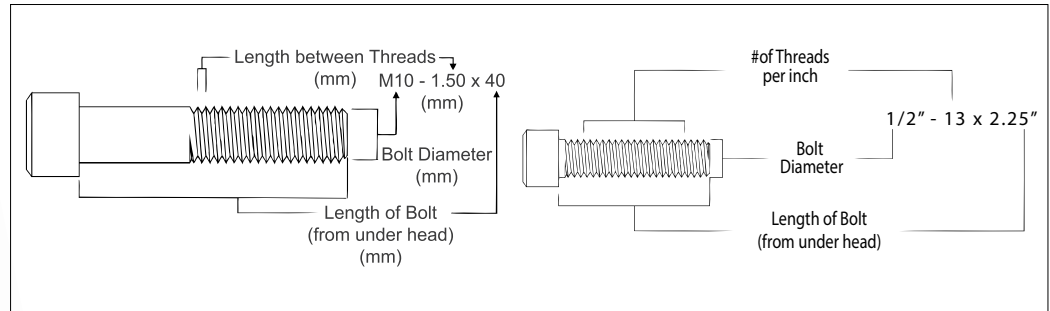
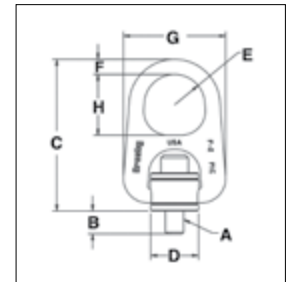


HR-1000MCT



- All load bearing components are heat treated, Quenched & Tempered alloy steel.
- All components, with the exception of the retaining ring, are produced with maximum material hardness of 34 HRC.
- All primary load-bearing components have Charpy impact testing. The body, bushing, washer and bail meet impact requirements of 31 ft-lb min. avg. at -4°F. The bolt meets impact requirements of 20 ft-lb min. avg. at -150°F.
- Individually magnetic particle inspected with certification.
- Forged bail provides the following:
 - Easily readable raised lettering showing the name Crosby or "CG" and PIC Code for material traceability.
 - Greater durability providing the increased toughness desired in potentially abusive field conditions.
 - Larger opening than standard hoist ring bail.
- Bolt specification is an alloy socket head cap screw to ASTM A320 Grade L7 or L43.
- Top washer is color-coded for easy identification (blue for UN threads and grey for Metric threads).
- The Working Load Limit and recommended torque value are permanently stamped into each washer.
- Individually Proof Tested to 2 times Working Load Limit (90° and in-line).
- BOLT SIZE IDENTIFICATION: The size of the bolt will be stated as in the drawing above. Illustration shows meaning of each dimension given.
- Type approval and certification in accordance with DNV Offshore Standard DNV-OS-E101, Drilling Plant, Standard for Certification DNVGL-ST-0378, Lifting Appliances, and DNVGL-SI-0166.
- Individually serialized.
- 100% MPI all primary load bearing components.
- Coating: Thermo-diffusion galvanized.
- Optional bolt sizes available upon request.



11

HR-1000MCT Metric Threads

Frame Size No.	Stock No.	Working Load Limit (kg)		Torque (Nm)	Bolt Size A	Eff. Thread Projection Length B	Dimensions (mm)						Mass Each (kg)
		Design Factor 5:1	Design Factor 4:1				C	D	Radius E	Diameter F	G	H	
2	6630058	825	1,030	38	M12 x 1.75 x 55	15.6	160.6	49.7	31.8	19.1	106.7	63.5	1
2	6630059	1,350	1,690	81	M16 x 2.00 x 65	25.5	160.6	49.7	31.8	19.1	106.7	63.5	1
3	6630060	2,250	2,810	136	M20 x 2.50 x 80	25.3	218.2	75.1	41.4	25.4	158.8	82.6	5
3	6630061	3,175	3,970	312	M24 x 3.00 x 90	35.4	218.2	75.1	41.4	25.4	158.8	82.6	5
4	6630062	5,450	6,810	637	M30 x 3.50 x 140	65.9	287.3	94.1	50.8	36.6	206.5	101.6	11
4	6630063	7,450	9,310	1,005	M36 x 4.00 x 130	56.3	287.3	94.1	50.8	36.6	206.5	101.6	12
5	6630064	13,250	16,560	1,350	M48 x 5.00 x 180	70.7	384.9	101.6	68.3	44.5	295.6	127.0	30

5:1 Design Factor.



Load Rated

Fatigue Rated

APPLICATION AND WARNING INFORMATION SECTION 17